

IMPACTING Spring Branch ISD



TEXAS SCHOOL FINANCE

A **LOOK** at the State's '**Robin Hood**' (RECAPTURE)

What is 'Robin Hood'?

Recapture, or **Robin Hood**, is the State's attempt at equalizing wealth between districts. Recapture was designed to take revenue from **property-wealthy districts** and pass it to **property-poor districts**.

RECAPTURE was designed to **equitably** fund **public education** across Texas.

A Broken Funding Model

Though **56%** of SBISD students come from low-income families, the district is considered property-wealthy under the State's 'Robin Hood' funding formula.

A Growing Trend

When originally designed, Texas had just **33 school districts** designated as property-wealthy under 'Robin Hood'.

Today, Texas has **over 400 Texas public school districts** are subject to 'Robin Hood'.

A Decade of Challenges

- 2006**
 - Legislature **reduced school property taxes**
 - School Boards **limited** on ability to set local tax rates
- 2011**
 - State funding for public education **reduced** by \$5.3B
 - SBISD **funding reduced** by \$37M

In 2011-12, Texas ranked **second nationally** in total public school enrollment, but 45th in the nation in per-student spending.
Texas schools **continue** to suffer as a result of 2011 funding cuts.

An Outdated Formula

The current formula for school funding is 30+ years old.
The current formula **does not** account for inflation.

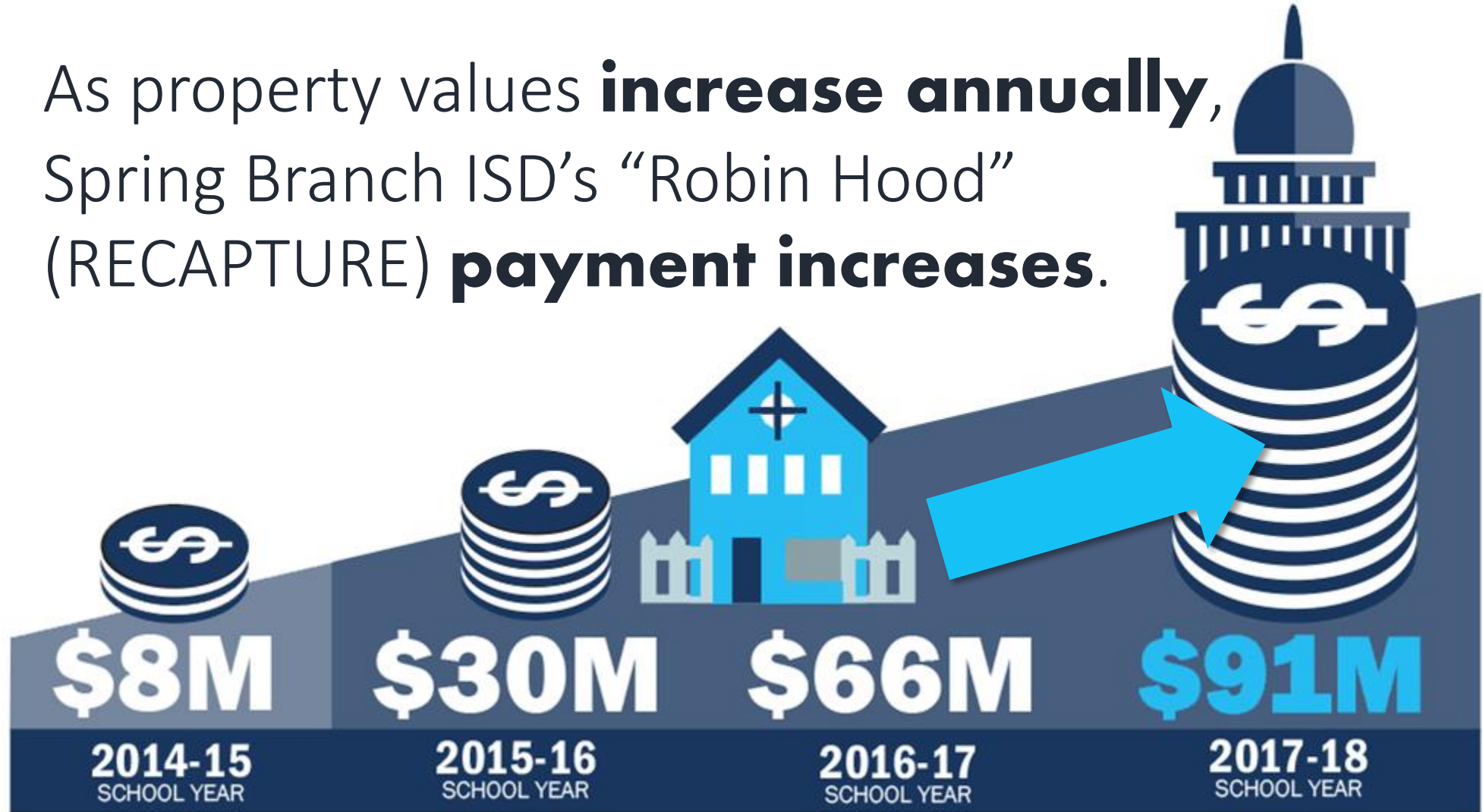
Without legislative change, SBISD anticipates recapture payments to **reach** a total of \$200M (2014-2018).

An Unequitable Burden

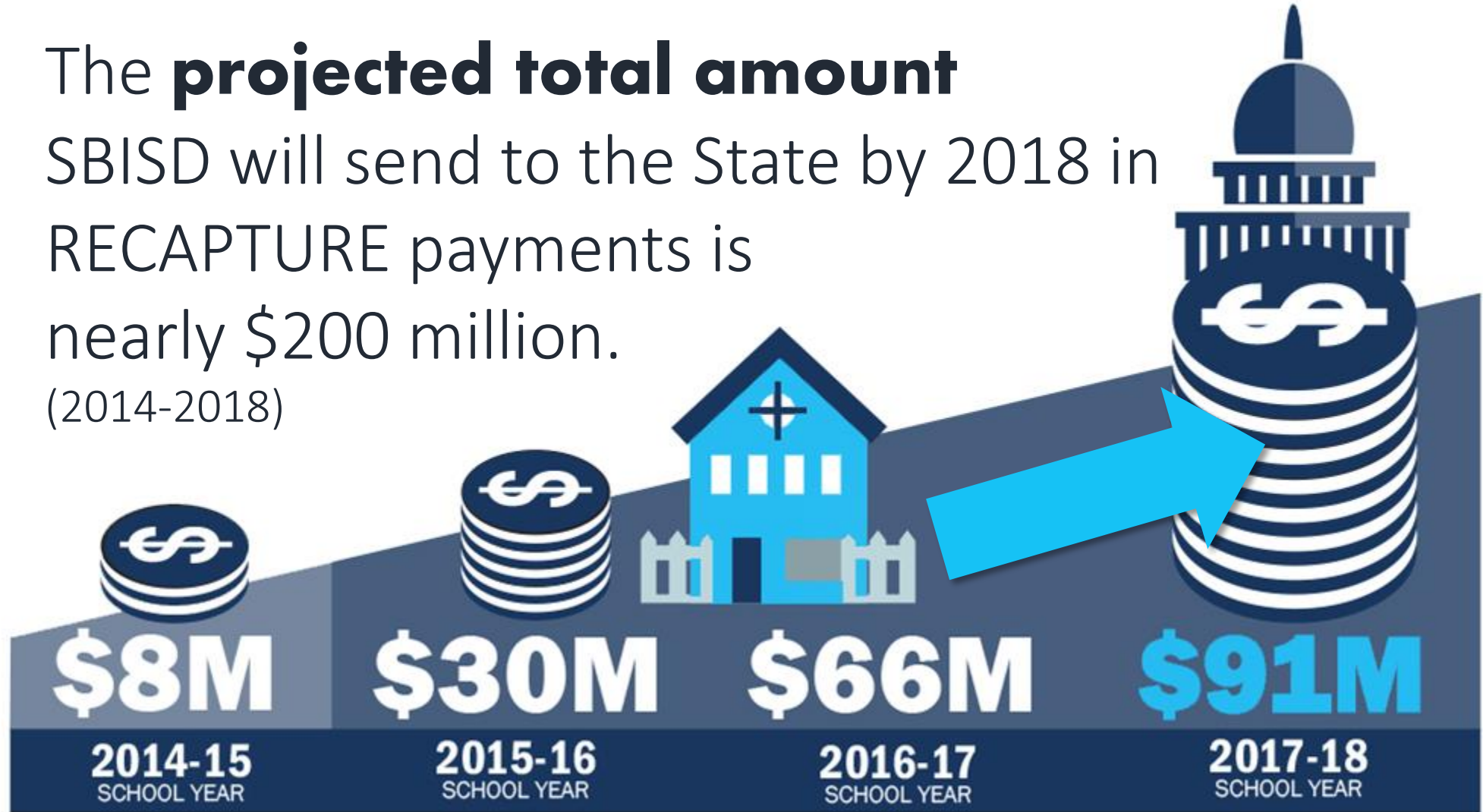
Spring Branch will send **\$66 million** of local taxpayer dollars to Austin this school year.

This is **more than double** the amount sent last year, totaling **17%** of local school property tax.

As property values **increase annually**,
Spring Branch ISD's "Robin Hood"
(RECAPTURE) **payment increases.**



The **projected total amount** SBISD will send to the State by 2018 in RECAPTURE payments is nearly \$200 million.
(2014-2018)





**How much does the State take
from SBISD in RECAPTURE?**

PER STUDENT

The State takes **\$1,883** per student in RECAPTURE.

Source: National Education Association

How much does the State take from SBISD in RECAPTURE?

RECAPTURE PER SCHOOL

\$4.8	Million per High School
\$1.9	Million per Middle School
\$1.2	Million per Elementary

Approximate Impact

An Unequitable Burden

Next school year, SBISD is projected **to receive only 6%** of our total revenue from the State.

On average, Texas school districts **receive 41%** of their total revenue funding from the State.

What can you do?

Spread the word...**share** what you've learned.

Invite us to **present** to your community.

Sign up for news on the SBISD website.

Share SBISD's legislative priorities and **engage**.

Email us: schoolfinance@springbranchisd.com

What can you do?

Contact your legislators.

(Ask them to **update school funding formulas**
& keep local taxes **under local control.**)

Get involved with Spring Branch Speaks:
springbranchspeaks.com

Connect with SBISD
www.springbranchisd.com/schoolfinance



TEXAS SCHOOL FINANCE

Be informed. Be engaged. Share your voice!